

## Crash Summary

I- 20 (WB Only) from MPT 64.200 to MPT 66.300

RICHLAND COUNTY

01/01/2015 - 09/30/2018 (3.7 years)

Length = 2.100 miles

AADT = 112,191

Functional Class = Urban -- Principal Arterial - Interstate

### *Crashes by Injury Class*

Fatality Crashes	2
Injury Crashes	110
PDO Crashes	508
<b>Total Crashes</b>	<b>620</b>

### *Crashes by Manner Of Collision*

Rear End	459
Angle	35
Sideswipe	71
Head On	3
Run Off Road	39
Animal	0
Bicycle	0
Pedestrian	0
Other	13
<b>Total Crashes</b>	<b>620</b>

### *Special Contributing Factors*

Night	130
Day	490
Wet	99
Dry	521

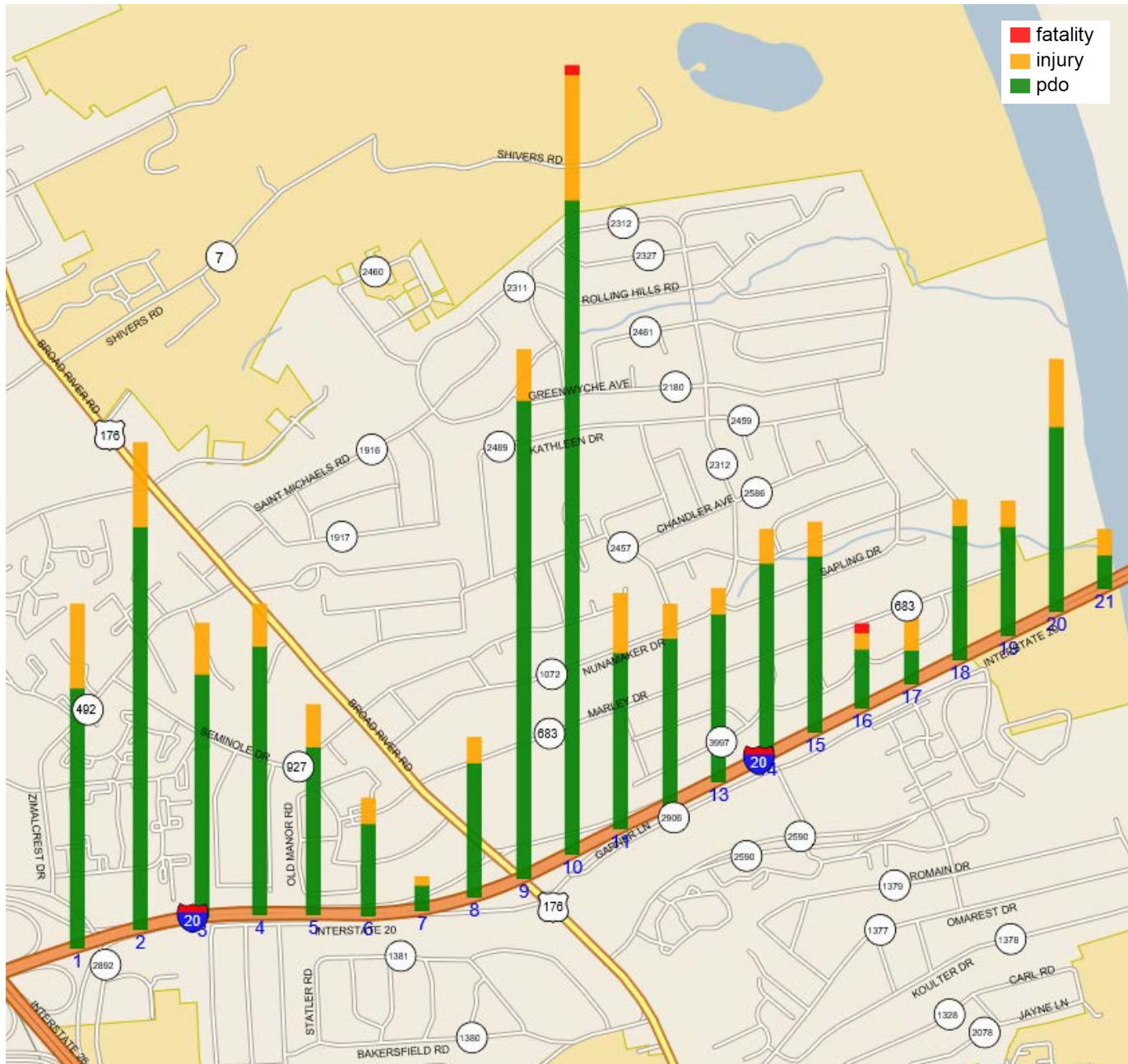
I- 20 (WB Only) from MPT 64.200 to MPT 66.300

RICHLAND COUNTY

01/01/2015 - 09/30/2018 (3.7 years)

Length = 2.100 miles AADT = 112,191

Functional Class = Urban -- Principal Arterial - Interstate



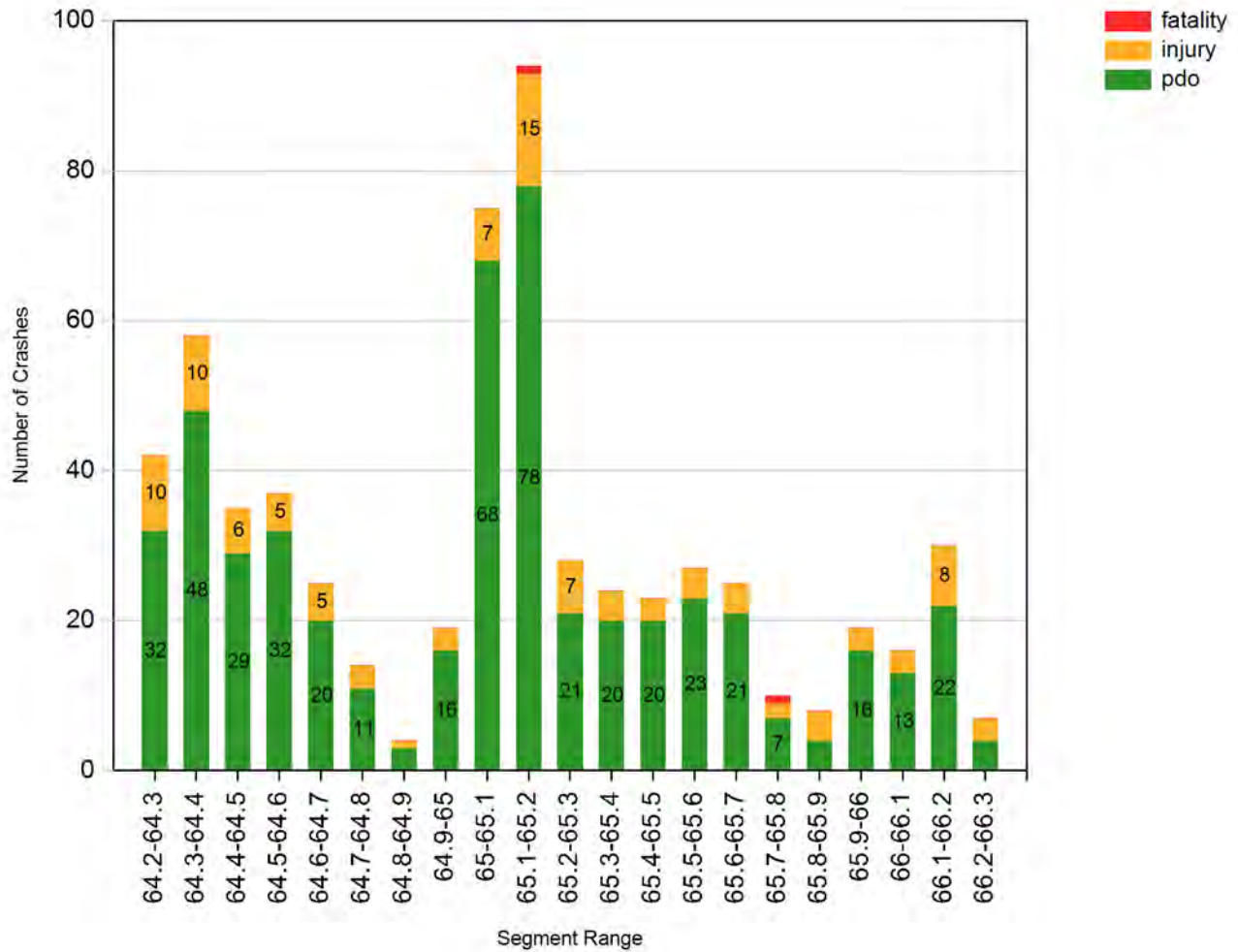
I- 20 (WB Only) from MPT 64.200 to MPT 66.300

RICHLAND COUNTY

01/01/2015 - 09/30/2018 (3.7 years)

Length = 2.100 miles AADT = 112,191

Functional Class = Urban -- Principal Arterial - Interstate



**I- 20 (WB Only) from MPT 64.200 to MPT 66.300**

**RICHLAND COUNTY**

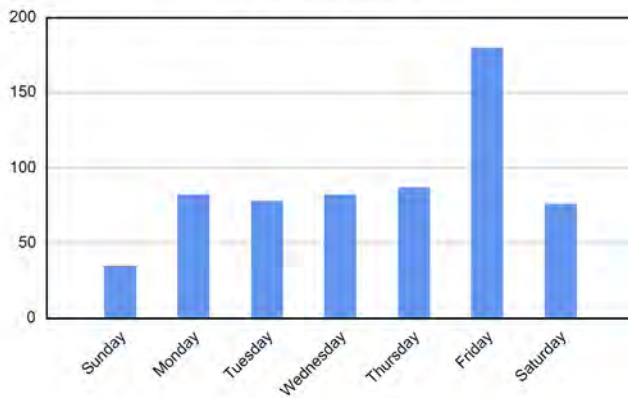
**01/01/2015 - 09/30/2018 (3.7 years)**

**Length = 2.100 miles AADT = 112,191**

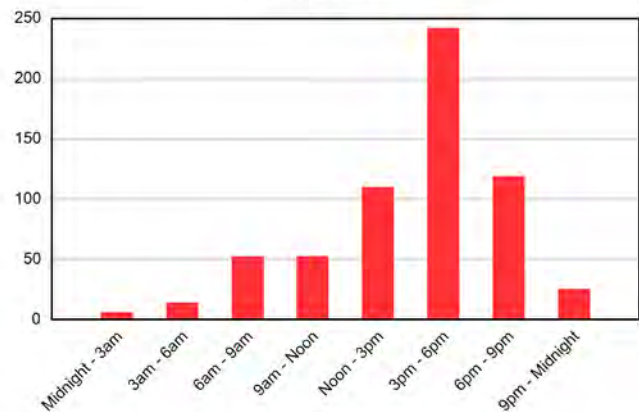
**Functional Class = Urban -- Principal Arterial - Interstate**

Year	2015	2016	2017	2018	Total
Rear End	132	123	135	69	459
Angle	6	11	13	5	35
Sideswipe	16	21	15	19	71
Head On	1	0	2	0	3
Run Off Road	10	8	12	9	39
Animal	0	0	0	0	0
Bicycle	0	0	0	0	0
Pedestrian	0	0	0	0	0
Other	0	8	2	3	13
	165	171	179	105	620

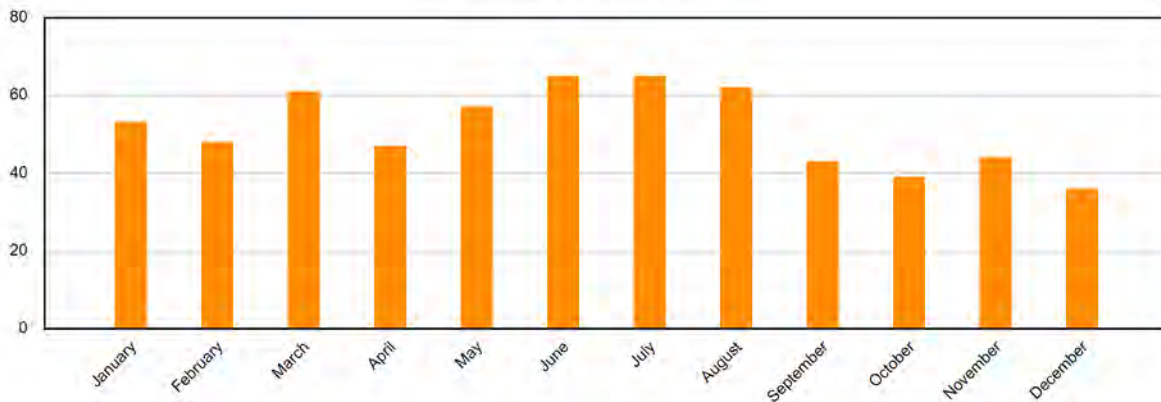
**Day of the Week**



**Time of Day**



**Month of the Year**



## Section Crashes

### MPT 64.200 to 64.300 ( Stack #1 )

**Total Crashes: 42   Light: 32   Dark: 10   Dry: 29   Wet: 13   Fatalities: 0   Injuries: 10   PDO: 32**

1	15501745	64.217	INJ0	DARK	DRY	MOTOR VEHICLE (IN TRANSPORT)	REAR END
2	15502188	64.242	INJ1	DARK	WET	TREE	NO COLLISION W/MV
3	15503712	64.273	INJ0	DAY	WET	OVERTURN/ROLLOVER	NO COLLISION W/MV
4	15521447	64.277	INJ0	DAY	WET	TREE	REAR END
5	15536947	64.273	INJ0	DAY	DRY	GUARDRAIL FACE	NO COLLISION W/MV
6	15542021	64.240	INJ1	DAY	WET	OVERTURN/ROLLOVER	NO COLLISION W/MV
7	15606566	64.230	INJ0	DARK	WET	DITCH	NO COLLISION W/MV
8	15623277	64.259	INJ0	DAY	WET	MOTOR VEHICLE (STOPPED)	REAR END
9	15638332	64.232	INJ0	DAY	DRY	MOTOR VEHICLE (IN TRANSPORT)	REAR END
10	16511723	64.239	INJ0	DAY	DRY	MOTOR VEHICLE (STOPPED)	REAR END
11	16528498	64.220	INJ1	DAY	DRY	DITCH	NO COLLISION W/MV
12	16551663	64.285	INJ1	DAY	WET	MOTOR VEHICLE (IN TRANSPORT)	REAR END
13	16553876	64.256	INJ0	DAY	WET	MOTOR VEHICLE (IN TRANSPORT)	REAR END
14	16596270	64.264	INJ0	DAY	DRY	MOTOR VEHICLE (STOPPED)	REAR END
15	16596344	64.204	INJ0	DAY	DRY	MOTOR VEHICLE (IN TRANSPORT)	ANGLE
16	16619071	64.298	INJ1	DAY	DRY	MOTOR VEHICLE (IN TRANSPORT)	REAR END
17	16619085	64.241	INJ1	DARK	WET	TREE	NO COLLISION W/MV
18	16623027	64.231	INJ0	DAY	DRY	MOTOR VEHICLE (STOPPED)	REAR END
19	16644060	64.295	INJ0	DAY	DRY	MOTOR VEHICLE (STOPPED)	REAR END
20	16644068	64.240	INJ1	DARK	DRY	MOTOR VEHICLE (IN TRANSPORT)	REAR END
21	16645087	64.220	INJ0	DAY	DRY	MOTOR VEHICLE (STOPPED)	REAR END
22	16665726	64.285	INJ0	DAY	DRY	MOTOR VEHICLE (STOPPED)	REAR END
23	16674379	64.241	INJ0	DAY	WET	MOTOR VEHICLE (IN TRANSPORT)	REAR END
24	17502721	64.220	INJ1	DARK	DRY	MOTOR VEHICLE (IN TRANSPORT)	REAR END
25	17502898	64.220	INJ0	DAY	DRY	MOTOR VEHICLE (IN TRANSPORT)	ANGLE
26	17509169	64.230	INJ0	DAY	DRY	MOTOR VEHICLE (IN TRANSPORT)	REAR END
27	17586492	64.210	INJ0	DAY	DRY	MOTOR VEHICLE (STOPPED)	REAR END
28	17589214	64.260	INJ0	DAY	WET	MOTOR VEHICLE (IN TRANSPORT)	SIDESWIPE SAME
29	17590620	64.270	INJ0	DAY	DRY	MOTOR VEHICLE (IN TRANSPORT)	REAR END
30	17593780	64.260	INJ0	DARK	WET	SEPARATION OF UNITS	NO COLLISION W/MV
31	17601920	64.220	INJ0	DAY	DRY	MOTOR VEHICLE (STOPPED)	REAR END
32	17618049	64.220	INJ0	DAY	DRY	MOTOR VEHICLE (STOPPED)	REAR END
33	17642671	64.220	INJ0	DAY	DRY	MOTOR VEHICLE (STOPPED)	REAR END
34	17643547	64.220	INJ1	DUSK	WET	MOTOR VEHICLE (IN TRANSPORT)	REAR END
35	17643841	64.220	INJ0	DAY	DRY	MOTOR VEHICLE (IN TRANSPORT)	SIDESWIPE SAME



## Section Crashes

36	17676016	64.250	INJ0	DAY	DRY	MOTOR VEHICLE (STOPPED)	REAR END
37	17676788	64.260	INJ0	DAY	DRY	MOTOR VEHICLE (STOPPED)	REAR END
38	18514227	64.224	INJ0	DUSK	DRY	MOTOR VEHICLE (IN TRANSPORT)	ANGLE
39	18570352	64.298	INJ0	DAY	DRY	MOTOR VEHICLE (STOPPED)	REAR END
40	18590066	64.298	INJ0	DAY	DRY	MOTOR VEHICLE (IN TRANSPORT)	SIDESWIPE SAME
41	18614451	64.275	INJ0	DAY	DRY	MOTOR VEHICLE (IN TRANSPORT)	SIDESWIPE SAME
42	18618409	64.212	INJ1	DARK	DRY	BRIDGE PIER OR ABUTMENT	BACKED INTO

## MPT 64.300 to 64.400 ( Stack #2 )

**Total Crashes: 58    Light: 44    Dark: 14    Dry: 45    Wet: 13    Fatalities: 0    Injuries: 10    PDO: 48**

1	15508901	64.365	INJ0	DARK	WET	MOTOR VEHICLE (IN TRANSPORT)	REAR END
2	15522493	64.372	INJ1	DAY	DRY	MOTOR VEHICLE (IN TRANSPORT)	REAR END
3	15532679	64.361	INJ0	DAY	DRY	MOTOR VEHICLE (IN TRANSPORT)	SIDESWIPE SAME
4	15535333	64.392	INJ0	DAY	DRY	MOTOR VEHICLE (STOPPED)	REAR END
5	15561421	64.333	INJ0	DAY	DRY	MOTOR VEHICLE (IN TRANSPORT)	REAR END
6	15599311	64.365	INJ0	DAY	DRY	MOTOR VEHICLE (STOPPED)	REAR END
7	15622323	64.374	INJ0	DARK	WET	MOTOR VEHICLE (STOPPED)	REAR END
8	15625186	64.376	INJ0	DARK	WET	MOTOR VEHICLE (STOPPED)	REAR END
9	15632873	64.353	INJ0	DUSK	DRY	MOTOR VEHICLE (STOPPED)	REAR END
10	15651676	64.379	INJ0	DAY	DRY	MOTOR VEHICLE (IN TRANSPORT)	REAR END
11	15651725	64.366	INJ0	DARK	DRY	MOTOR VEHICLE (STOPPED)	REAR END
12	16504393	64.320	INJ0	DAY	WET	TREE	NO COLLISION W/MV
13	16504540	64.373	INJ0	DAY	DRY	MOTOR VEHICLE (STOPPED)	REAR END
14	16511204	64.394	INJ0	DAY	DRY	MOTOR VEHICLE (IN TRANSPORT)	SIDESWIPE SAME
15	16522946	64.361	INJ0	DAY	DRY	MOTOR VEHICLE (IN TRANSPORT)	REAR END
16	16524525	64.360	INJ1	DAY	DRY	MOTOR VEHICLE (STOPPED)	REAR END
17	16542526	64.353	INJ0	DAY	DRY	MOTOR VEHICLE (IN TRANSPORT)	SIDESWIPE SAME
18	16546502	64.334	INJ0	DAY	DRY	MOTOR VEHICLE (IN TRANSPORT)	SIDESWIPE SAME
19	16581861	64.364	INJ0	DAY	DRY	MOTOR VEHICLE (IN TRANSPORT)	SIDESWIPE SAME
20	16591831	64.374	INJ0	DUSK	DRY	MOTOR VEHICLE (STOPPED)	REAR END
21	16611286	64.392	INJ0	DAY	DRY	MOTOR VEHICLE (IN TRANSPORT)	REAR END
22	16619052	64.357	INJ1	DAY	DRY	MOTOR VEHICLE (STOPPED)	REAR END
23	16626074	64.334	INJ0	DARK	WET	MOTOR VEHICLE (IN TRANSPORT)	SIDESWIPE SAME
24	16631137	64.366	INJ0	DARK	WET	MOTOR VEHICLE (STOPPED)	REAR END
25	16659057	64.386	INJ1	DAY	WET	MOTOR VEHICLE (IN TRANSPORT)	REAR END
26	16674355	64.368	INJ1	DARK	WET	MOTOR VEHICLE (IN TRANSPORT)	REAR END
27	16674356	64.368	INJ0	DARK	WET	MOTOR VEHICLE (STOPPED)	REAR END
28	17530593	64.320	INJ0	DAY	DRY	MOTOR VEHICLE (IN TRANSPORT)	REAR END

## Section Crashes

29	17584662	64.320	INJ1	DAY	DRY	MOTOR VEHICLE (IN TRANSPORT)	REAR END
30	17586546	64.320	INJ0	DAY	WET	MOTOR VEHICLE (IN TRANSPORT)	ANGLE
31	17590272	64.365	INJ0	DARK	WET	GUARDRAIL END	NO COLLISION W/MV
32	17590416	64.370	INJ0	DAY	DRY	MOTOR VEHICLE (STOPPED)	REAR END
33	17596586	64.320	INJ1	DAY	DRY	MOTOR VEHICLE (IN TRANSPORT)	REAR END
34	17596588	64.320	INJ0	DAY	DRY	MOTOR VEHICLE (STOPPED)	REAR END
35	17596717	64.320	INJ0	DAY	DRY	MOTOR VEHICLE (IN TRANSPORT)	REAR END
36	17629615	64.390	INJ0	DAY	WET	MOTOR VEHICLE (IN TRANSPORT)	REAR END
37	17629627	64.320	INJ0	DAY	DRY	MOTOR VEHICLE (OTHER ROADWAY)	SIDESWIPE SAME
38	17658327	64.360	INJ0	DAY	DRY	MOTOR VEHICLE (IN TRANSPORT)	REAR END
39	17662703	64.320	INJ0	DARK	DRY	MOTOR VEHICLE (IN TRANSPORT)	REAR END
40	17662760	64.360	INJ0	DARK	WET	MOTOR VEHICLE (STOPPED)	REAR END
41	17674484	64.320	INJ0	DARK	DRY	MOTOR VEHICLE (STOPPED)	REAR END
42	17676162	64.320	INJ0	DAY	DRY	MOTOR VEHICLE (IN TRANSPORT)	REAR END
43	17678669	64.320	INJ0	DAY	DRY	MOTOR VEHICLE (IN TRANSPORT)	ANGLE
44	18534104	64.395	INJ1	DAY	DRY	MOTOR VEHICLE (STOPPED)	REAR END
45	18549943	64.327	INJ0	DAY	DRY	MOTOR VEHICLE (IN TRANSPORT)	REAR END
46	18554359	64.359	INJ0	DAY	DRY	MOTOR VEHICLE (STOPPED)	REAR END
47	18579810	64.371	INJ0	DAY	DRY	MOTOR VEHICLE (STOPPED)	REAR END
48	18588083	64.395	INJ1	DAY	DRY	MOTOR VEHICLE (STOPPED)	REAR END
49	18588093	64.370	INJ0	DAY	DRY	MOTOR VEHICLE (STOPPED)	ANGLE
50	18588814	64.344	INJ1	DAY	DRY	MOTOR VEHICLE (IN TRANSPORT)	REAR END
51	18591724	64.398	INJ0	DAY	DRY	MOTOR VEHICLE (STOPPED)	REAR END
52	18596212	64.394	INJ0	DAY	DRY	MOTOR VEHICLE (IN TRANSPORT)	REAR END
53	18614985	64.320	INJ0	DAY	DRY	MOTOR VEHICLE (IN TRANSPORT)	REAR END
54	18614989	64.327	INJ0	DAY	DRY	MOTOR VEHICLE (STOPPED)	REAR END
55	18618473	64.347	INJ0	DAY	DRY	MOTOR VEHICLE (STOPPED)	REAR END
56	18620606	64.344	INJ0	DAY	DRY	MOTOR VEHICLE (IN TRANSPORT)	REAR END
57	18624260	64.316	INJ0	DAY	DRY	MOTOR VEHICLE (STOPPED)	REAR END
58	18641760	64.308	INJ0	DAY	DRY	MOTOR VEHICLE (IN TRANSPORT)	SIDESWIPE SAME

### MPT 64.400 to 64.500 ( Stack #3 )

**Total Crashes: 35   Light: 27   Dark: 8   Dry: 32   Wet: 3   Fatalities: 0   Injuries: 6   PDO: 29**

1	15504127	64.423	INJ0	DARK	DRY	MOTOR VEHICLE (STOPPED)	REAR END
2	15517452	64.491	INJ1	DARK	DRY	OVERTURN/ROLLOVER	REAR END
3	15524064	64.484	INJ0	DAY	DRY	MOTOR VEHICLE (IN TRANSPORT)	REAR END
4	15558628	64.493	INJ0	DAY	DRY	MOTOR VEHICLE (IN TRANSPORT)	SIDESWIPE SAME
5	15560760	64.491	INJ0	DAY	DRY	MOTOR VEHICLE (IN TRANSPORT)	SIDESWIPE SAME

## Section Crashes

6	15561498	64.437	INJ0	DAY	DRY	MEDIAN BARRIER	NO COLLISION W/MV
7	15561818	64.485	INJ0	DAY	DRY	MOTOR VEHICLE (STOPPED)	REAR END
8	15562412	64.449	INJ0	DAY	DRY	MOTOR VEHICLE (IN TRANSPORT)	REAR END
9	15571531	64.464	INJ1	DAY	DRY	MOTOR VEHICLE (STOPPED)	REAR END
10	15573511	64.420	INJ0	DAY	DRY	MOTOR VEHICLE (STOPPED)	REAR END
11	15585011	64.421	INJ0	DAY	DRY	MOTOR VEHICLE (IN TRANSPORT)	SIDESWIPE SAME
12	15600325	64.469	INJ0	DAY	DRY	MOTOR VEHICLE (IN TRANSPORT)	REAR END
13	15639436	64.426	INJ0	DAY	DRY	MOTOR VEHICLE (STOPPED)	REAR END
14	15640290	64.485	INJ0	DUSK	WET	MOTOR VEHICLE (IN TRANSPORT)	REAR END
15	16511205	64.452	INJ0	DAY	DRY	MOTOR VEHICLE (STOPPED)	REAR END
16	16516806	64.412	INJ0	DAY	DRY	MOTOR VEHICLE (STOPPED)	REAR END
17	16536935	64.402	INJ0	DAY	DRY	MOTOR VEHICLE (IN TRANSPORT)	REAR END
18	16598242	64.459	INJ0	DAY	DRY	MOTOR VEHICLE (STOPPED)	REAR END
19	16602079	64.445	INJ2	DAY	DRY	MOTOR VEHICLE (IN TRANSPORT)	REAR END
20	16629172	64.431	INJ1	DARK	DRY	MOTOR VEHICLE (STOPPED)	REAR END
21	16648002	64.452	INJ0	DARK	DRY	MOTOR VEHICLE (IN TRANSPORT)	REAR END
22	16665758	64.409	INJ0	DARK	DRY	MOTOR VEHICLE (IN TRANSPORT)	SIDESWIPE SAME
23	17555056	64.490	INJ0	DAY	DRY	MOTOR VEHICLE (IN TRANSPORT)	REAR END
24	17577084	64.420	INJ0	DAY	DRY	MOTOR VEHICLE (IN TRANSPORT)	REAR END
25	17577086	64.420	INJ0	DAY	DRY	MOTOR VEHICLE (IN TRANSPORT)	REAR END
26	17586579	64.420	INJ1	DAY	DRY	MOTOR VEHICLE (STOPPED)	REAR END
27	17629609	64.400	INJ0	DAY	WET	MOTOR VEHICLE (IN TRANSPORT)	REAR END
28	17643445	64.468	INJ0	DAY	DRY	MOTOR VEHICLE (IN TRANSPORT)	REAR END
29	17663412	64.470	INJ0	DARK	DRY	MOTOR VEHICLE (STOPPED)	REAR END
30	17678676	64.420	INJ0	DAY	DRY	MOTOR VEHICLE (IN TRANSPORT)	SIDESWIPE SAME
31	18515415	64.445	INJ0	DARK	DRY	MOTOR VEHICLE (IN TRANSPORT)	REAR END
32	18536201	64.467	INJ0	DAY	DRY	MOTOR VEHICLE (IN TRANSPORT)	SIDESWIPE SAME
33	18545803	64.420	INJ0	DAY	DRY	MOTOR VEHICLE (IN TRANSPORT)	REAR END
34	18585334	64.426	INJ0	DAY	DRY	MOTOR VEHICLE (IN TRANSPORT)	REAR END
35	18597812	64.488	INJ1	DAY	WET	MOTOR VEHICLE (STOPPED)	REAR END

### MPT 64.500 to 64.600 ( Stack #4 )

**Total Crashes: 37   Light: 30   Dark: 7   Dry: 32   Wet: 5   Fatalities: 0   Injuries: 5   PDO: 32**

1	15512142	64.562	INJ0	DAY	DRY	MOTOR VEHICLE (STOPPED)	REAR END
2	15518607	64.576	INJ0	DAY	DRY	MOTOR VEHICLE (STOPPED)	REAR END
3	15522504	64.573	INJ0	DAY	DRY	MOTOR VEHICLE (IN TRANSPORT)	REAR END
4	15524448	64.570	INJ0	DAY	DRY	MOTOR VEHICLE (IN TRANSPORT)	REAR END
5	15545801	64.581	INJ0	DAY	DRY	MOTOR VEHICLE (IN TRANSPORT)	REAR END



## Section Crashes

6	15556022	64.505	INJ0	DAY	DRY	MOTOR VEHICLE (IN TRANSPORT)	SIDESWIPE SAME
7	15560859	64.566	INJ0	DAY	DRY	MOTOR VEHICLE (IN TRANSPORT)	REAR END
8	15560873	64.570	INJ0	DAY	DRY	MOTOR VEHICLE (IN TRANSPORT)	REAR END
9	15574312	64.572	INJ0	DAY	DRY	MOTOR VEHICLE (IN TRANSPORT)	REAR END
10	15610131	64.548	INJ1	DUSK	WET	MOTOR VEHICLE (STOPPED)	REAR END
11	15622306	64.582	INJ0	DAY	DRY	MOTOR VEHICLE (STOPPED)	REAR END
12	15626016	64.562	INJ0	DARK	WET	MOTOR VEHICLE (IN TRANSPORT)	SIDESWIPE SAME
13	16502369	64.571	INJ0	DARK	DRY	MOTOR VEHICLE (STOPPED)	REAR END
14	16503833	64.548	INJ1	DAY	WET	MOTOR VEHICLE (STOPPED)	REAR END
15	16522663	64.573	INJ1	DAY	DRY	MOTOR VEHICLE (IN TRANSPORT)	REAR END
16	16567702	64.581	INJ0	DAY	DRY	MOTOR VEHICLE (IN TRANSPORT)	REAR END
17	16577916	64.559	INJ0	DAY	DRY	MOTOR VEHICLE (IN TRANSPORT)	REAR END
18	16607154	64.571	INJ0	DAY	DRY	MOTOR VEHICLE (IN TRANSPORT)	ANGLE
19	16619168	64.516	INJ0	DAY	DRY	MOTOR VEHICLE (IN TRANSPORT)	ANGLE
20	16658972	64.574	INJ0	DAY	DRY	MOTOR VEHICLE (IN TRANSPORT)	REAR END
21	16658976	64.572	INJ0	DAY	DRY	MOTOR VEHICLE (IN TRANSPORT)	REAR END
22	16668774	64.529	INJ0	DARK	DRY	MOTOR VEHICLE (IN TRANSPORT)	BACKED INTO
23	17525189	64.550	INJ0	DARK	DRY	MOTOR VEHICLE (IN TRANSPORT)	REAR END
24	17581082	64.530	INJ0	DAY	DRY	MOTOR VEHICLE (IN TRANSPORT)	REAR END
25	17589442	64.516	INJ0	DAY	DRY	MOTOR VEHICLE (IN TRANSPORT)	REAR END
26	17589447	64.566	INJ1	DAY	DRY	MOTOR VEHICLE (IN TRANSPORT)	REAR END
27	17630725	64.540	INJ0	DAY	DRY	MOTOR VEHICLE (IN TRANSPORT)	REAR END
28	17667703	64.520	INJ0	DARK	WET	MOTOR VEHICLE (STOPPED)	REAR END
29	18537227	64.546	INJ0	DARK	DRY	MEDIAN BARRIER	NO COLLISION W/MV
30	18551820	64.544	INJ0	DAY	DRY	MOTOR VEHICLE (IN TRANSPORT)	REAR END
31	18575947	64.532	INJ0	DAY	DRY	MOTOR VEHICLE (STOPPED)	REAR END
32	18585325	64.514	INJ0	DAY	DRY	MOTOR VEHICLE (IN TRANSPORT)	SIDESWIPE SAME
33	18585457	64.515	INJ2	DAY	DRY	MOTOR VEHICLE (IN TRANSPORT)	ANGLE
34	18589972	64.534	INJ0	DAY	DRY	MOTOR VEHICLE (IN TRANSPORT)	ANGLE
35	18597826	64.566	INJ0	DAY	DRY	MOTOR VEHICLE (STOPPED)	REAR END
36	18606009	64.507	INJ0	DAY	WET	MOTOR VEHICLE (STOPPED)	REAR END
37	18621882	64.545	INJ0	DAY	DRY	MOTOR VEHICLE (STOPPED)	REAR END

### MPT 64.600 to 64.700 ( Stack #5 )

**Total Crashes: 25   Light: 22   Dark: 3   Dry: 19   Wet: 6   Fatalities: 0   Injuries: 5   PDO: 20**

1	15518608	64.650	INJ0	DAY	DRY	MOTOR VEHICLE (IN TRANSPORT)	REAR END
2	15524480	64.666	INJ0	DAY	WET	MOTOR VEHICLE (STOPPED)	REAR END
3	15529853	64.604	INJ0	DAY	DRY	MOTOR VEHICLE (STOPPED)	REAR END

## Section Crashes

4	15573579	64.629	INJ0	DAY	DRY	MOTOR VEHICLE (IN TRANSPORT)	SIDESWIPE SAME
5	15574289	64.681	INJ0	DAY	DRY	MOTOR VEHICLE (IN TRANSPORT)	REAR END
6	15582607	64.668	INJ0	DAY	DRY	MOTOR VEHICLE (STOPPED)	REAR END
7	15597990	64.697	INJ0	DAY	DRY	MOTOR VEHICLE (STOPPED)	REAR END
8	15612467	64.673	INJ1	DAY	DRY	MOTOR VEHICLE (STOPPED)	REAR END
9	16529498	64.617	INJ0	DAY	DRY	MOTOR VEHICLE (IN TRANSPORT)	REAR END
10	16562899	64.687	INJ3	DAY	DRY	MOTOR VEHICLE (STOPPED)	REAR END
11	16605420	64.638	INJ1	DAY	DRY	MOTOR VEHICLE (IN TRANSPORT)	REAR END
12	16619081	64.630	INJ0	DAY	DRY	MOTOR VEHICLE (IN TRANSPORT)	REAR END
13	16619120	64.647	INJ2	DAY	WET	MOTOR VEHICLE (IN TRANSPORT)	REAR END
14	16640692	64.664	INJ0	DAY	DRY	MOTOR VEHICLE (IN TRANSPORT)	REAR END
15	17586578	64.620	INJ0	DAY	DRY	MOTOR VEHICLE (STOPPED)	REAR END
16	17590190	64.620	INJ0	DARK	WET	MOTOR VEHICLE (PARKED)	REAR END
17	17613774	64.689	INJ0	DAY	DRY	MOTOR VEHICLE (IN TRANSPORT)	REAR END
18	17658437	64.620	INJ0	DUSK	DRY	MOTOR VEHICLE (STOPPED)	REAR END
19	17675889	64.630	INJ0	DARK	DRY	MOTOR VEHICLE (IN TRANSPORT)	ANGLE
20	18549054	64.641	INJ0	DAY	DRY	MOTOR VEHICLE (STOPPED)	REAR END
21	18581430	64.667	INJ0	DAY	WET	MOTOR VEHICLE (STOPPED)	REAR END
22	18581432	64.687	INJ0	DAY	WET	MOTOR VEHICLE (STOPPED)	REAR END
23	18585335	64.617	INJ1	DAY	DRY	MOTOR VEHICLE (STOPPED)	REAR END
24	18605929	64.624	INJ0	DAY	DRY	MOTOR VEHICLE (STOPPED)	REAR END
25	18630854	64.613	INJ0	DAY	WET	GUARDRAIL END	NO COLLISION W/MV

### MPT 64.700 to 64.800 ( Stack #6 )

**Total Crashes: 14   Light: 13   Dark: 1   Dry: 11   Wet: 3   Fatalities: 0   Injuries: 3   PDO: 11**

1	15561344	64.719	INJ0	DAY	WET	MOTOR VEHICLE (STOPPED)	REAR END
2	15633155	64.726	INJ1	DARK	DRY	MOTOR VEHICLE (IN TRANSPORT)	REAR END
3	16506261	64.710	INJ0	DAY	WET	MOTOR VEHICLE (IN TRANSPORT)	SIDESWIPE SAME
4	16513938	64.733	INJ0	DAY	DRY	MOTOR VEHICLE (IN TRANSPORT)	REAR END
5	16534501	64.749	INJ0	DAY	DRY	MOTOR VEHICLE (STOPPED)	REAR END
6	16547757	64.706	INJ0	DAY	DRY	MOTOR VEHICLE (STOPPED)	SIDESWIPE SAME
7	16574255	64.730	INJ1	DAY	DRY	MOTOR VEHICLE (IN TRANSPORT)	REAR END
8	16674482	64.754	INJ1	DAY	DRY	MOTOR VEHICLE (IN TRANSPORT)	REAR END
9	17589441	64.740	INJ0	DAY	DRY	MOTOR VEHICLE (STOPPED)	ANGLE
10	18588094	64.793	INJ0	DAY	DRY	MOTOR VEHICLE (IN TRANSPORT)	REAR END
11	18592060	64.719	INJ0	DAY	DRY	MOTOR VEHICLE (IN TRANSPORT)	REAR END
12	18596201	64.708	INJ0	DAY	WET	MOTOR VEHICLE (STOPPED)	REAR END
13	18601678	64.700	INJ0	DAY	DRY	MOTOR VEHICLE (STOPPED)	REAR END

## Section Crashes

14	18630107	64.779	INJ0	DAY	DRY	MOTOR VEHICLE (IN TRANSPORT)	SIDESWIPE SAME
----	----------	--------	------	-----	-----	------------------------------	----------------

### MPT 64.800 to 64.900 ( Stack #7 )

**Total Crashes: 4   Light: 4   Dark: 0   Dry: 4   Wet: 0   Fatalities: 0   Injuries: 1   PDO: 3**

1	15561510	64.826	INJ0	DAY	DRY	MOTOR VEHICLE (IN TRANSPORT)	REAR END
2	15582906	64.890	INJ0	DAY	DRY	MOTOR VEHICLE (IN TRANSPORT)	REAR END
3	18614704	64.878	INJ1	DAY	DRY	MOTOR VEHICLE (STOPPED)	REAR END
4	18621125	64.853	INJ0	DAY	DRY	MOTOR VEHICLE (IN TRANSPORT)	REAR END

### MPT 64.900 to 65.000 ( Stack #8 )

**Total Crashes: 19   Light: 14   Dark: 5   Dry: 17   Wet: 2   Fatalities: 0   Injuries: 3   PDO: 16**

1	15526319	64.998	INJ0	DAY	DRY	MOTOR VEHICLE (IN TRANSPORT)	REAR END
2	15547233	64.903	INJ1	DARK	DRY	MEDIAN BARRIER	NO COLLISION W/MV
3	15560883	64.907	INJ0	DAY	DRY	MOTOR VEHICLE (IN TRANSPORT)	REAR END
4	15561573	64.960	INJ0	DAY	DRY	MOTOR VEHICLE (STOPPED)	REAR END
5	15573823	64.904	INJ1	DARK	DRY	MOTOR VEHICLE (IN TRANSPORT)	REAR END
6	15589684	64.903	INJ0	DAY	DRY	MOTOR VEHICLE (IN TRANSPORT)	ANGLE
7	16518207	64.954	INJ0	DUSK	DRY	MOTOR VEHICLE (STOPPED)	REAR END
8	16580933	64.983	INJ0	DAY	DRY	MOTOR VEHICLE (IN TRANSPORT)	REAR END
9	16595556	64.931	INJ0	DAY	DRY	MOTOR VEHICLE (IN TRANSPORT)	ANGLE
10	16596245	64.933	INJ0	DAY	DRY	OTHER MOVABLE OBJECT	NO COLLISION W/MV
11	16598282	64.915	INJ0	DAY	DRY	MOTOR VEHICLE (STOPPED)	REAR END
12	16653008	64.956	INJ0	DAY	DRY	CARGO/EQUIP LOSS OR SHIFT	NO COLLISION W/MV
13	17528298	64.960	INJ0	DAY	DRY	MOTOR VEHICLE (IN TRANSPORT)	REAR END
14	17531874	64.910	INJ0	DAY	DRY	MOTOR VEHICLE (IN TRANSPORT)	REAR END
15	17658558	64.930	INJ0	DAY	DRY	MOTOR VEHICLE (STOPPED)	REAR END
16	18522955	64.957	INJ0	DARK	DRY	MOTOR VEHICLE (IN TRANSPORT)	SIDESWIPE SAME
17	18536733	64.949	INJ0	DAY	WET	MOTOR VEHICLE (IN TRANSPORT)	REAR END
18	18536785	64.945	INJ0	DARK	DRY	MOTOR VEHICLE (IN TRANSPORT)	SIDESWIPE SAME
19	18618445	64.976	INJ2	DAY	WET	MOTOR VEHICLE (IN TRANSPORT)	SIDESWIPE SAME

### MPT 65.000 to 65.100 ( Stack #9 )

**Total Crashes: 75   Light: 59   Dark: 16   Dry: 64   Wet: 11   Fatalities: 0   Injuries: 7   PDO: 68**

1	15500481	65.094	INJ0	DAY	DRY	MOTOR VEHICLE (STOPPED)	REAR END
2	15512392	65.052	INJ0	DAY	DRY	MOTOR VEHICLE (IN TRANSPORT)	REAR END
3	15514008	65.038	INJ0	DAY	DRY	MOTOR VEHICLE (STOPPED)	REAR END
4	15516378	65.098	INJ0	DARK	WET	MOTOR VEHICLE (STOPPED)	REAR END
5	15516623	65.029	INJ0	DARK	DRY	MOTOR VEHICLE (STOPPED)	REAR END

## Section Crashes

6	15523647	65.040	INJ0	DAY	DRY	MOTOR VEHICLE (STOPPED)	REAR END
7	15527108	65.042	INJ0	DAY	WET	MOTOR VEHICLE (IN TRANSPORT)	REAR END
8	15528572	65.038	INJ0	DAY	WET	MOTOR VEHICLE (STOPPED)	REAR END
9	15531552	65.028	INJ0	DAY	DRY	MOTOR VEHICLE (STOPPED)	REAR END
10	15545877	65.032	INJ0	DAY	DRY	MOTOR VEHICLE (STOPPED)	REAR END
11	15557021	65.039	INJ0	DAY	DRY	MOTOR VEHICLE (IN TRANSPORT)	REAR END
12	15560644	65.029	INJ0	DAY	DRY	MOTOR VEHICLE (IN TRANSPORT)	ANGLE
13	15561397	65.031	INJ0	DAY	DRY	MOTOR VEHICLE (STOPPED)	REAR END
14	15561555	65.033	INJ0	DAY	DRY	MOTOR VEHICLE (STOPPED)	REAR END
15	15561705	65.035	INJ0	DAY	DRY	MOTOR VEHICLE (STOPPED)	REAR END
16	15573445	65.061	INJ0	DAY	WET	MOTOR VEHICLE (IN TRANSPORT)	REAR END
17	15573757	65.089	INJ0	DAY	DRY	MOTOR VEHICLE (STOPPED)	REAR END
18	15580595	65.058	INJ0	DARK	DRY	MOTOR VEHICLE (STOPPED)	REAR END
19	15589891	65.040	INJ0	DAY	DRY	MOTOR VEHICLE (STOPPED)	REAR END
20	15590585	65.042	INJ2	DAY	DRY	MOTOR VEHICLE (STOPPED)	REAR END
21	15610116	65.094	INJ0	DAY	DRY	MOTOR VEHICLE (STOPPED)	REAR END
22	15615926	65.009	INJ0	DARK	DRY	MOTOR VEHICLE (PARKED)	SIDESWIPE SAME
23	15619188	65.037	INJ0	DAY	DRY	MOTOR VEHICLE (STOPPED)	REAR END
24	15633055	65.033	INJ0	DAY	DRY	MOTOR VEHICLE (STOPPED)	REAR END
25	15637987	65.097	INJ0	DARK	DRY	MOTOR VEHICLE (STOPPED)	REAR END
26	15644478	65.068	INJ0	DAY	DRY	MOTOR VEHICLE (STOPPED)	REAR END
27	15645639	65.045	INJ0	DAY	DRY	MOTOR VEHICLE (IN TRANSPORT)	REAR END
28	15651677	65.014	INJ0	DARK	DRY	MOTOR VEHICLE (STOPPED)	REAR END
29	15653089	65.058	INJ0	DARK	DRY	MOTOR VEHICLE (STOPPED)	REAR END
30	15653090	65.059	INJ0	DARK	DRY	MOTOR VEHICLE (STOPPED)	REAR END
31	15653367	65.061	INJ0	DAY	DRY	MOTOR VEHICLE (STOPPED)	REAR END
32	15654035	65.095	INJ0	DUSK	WET	MOTOR VEHICLE (IN TRANSPORT)	REAR END
33	16504538	65.006	INJ0	DAY	DRY	OTHER (POST, POLE, SUPPORT, ETC)	NO COLLISION W/MV
34	16506478	65.040	INJ0	DAY	DRY	MOTOR VEHICLE (STOPPED)	REAR END
35	16518200	65.016	INJ0	DAY	DRY	MOTOR VEHICLE (IN TRANSPORT)	SIDESWIPE SAME
36	16524532	65.078	INJ0	DAY	DRY	MOTOR VEHICLE (STOPPED)	REAR END
37	16526392	65.033	INJ0	DAY	DRY	MOTOR VEHICLE (STOPPED)	REAR END
38	16526744	65.085	INJ0	DARK	WET	MOTOR VEHICLE (IN TRANSPORT)	REAR END
39	16533575	65.091	INJ0	DAY	DRY	MOTOR VEHICLE (STOPPED)	REAR END
40	16539673	65.040	INJ0	DAY	DRY	MOTOR VEHICLE (STOPPED)	REAR END
41	16542154	65.034	INJ0	DARK	DRY	MOTOR VEHICLE (STOPPED)	REAR END
42	16543462	65.092	INJ2	DAY	WET	MOTOR VEHICLE (STOPPED)	REAR END
43	16545828	65.050	INJ0	DAY	DRY	MOTOR VEHICLE (STOPPED)	REAR END

## Section Crashes

44	16564250	65.030	INJ0	DAY	WET	MOTOR VEHICLE (IN TRANSPORT)	REAR END
45	16578037	65.033	INJ0	DAY	DRY	MOTOR VEHICLE (STOPPED)	REAR END
46	16598198	65.028	INJ0	DAY	DRY	MOTOR VEHICLE (STOPPED)	REAR END
47	16598353	65.035	INJ0	DAY	DRY	MOTOR VEHICLE (IN TRANSPORT)	REAR END
48	16598388	65.006	INJ0	DAY	DRY	MOTOR VEHICLE (IN TRANSPORT)	REAR END
49	16609983	65.006	INJ0	DAY	DRY	MOTOR VEHICLE (STOPPED)	REAR END
50	16636206	65.003	INJ0	DAY	DRY	MOTOR VEHICLE (IN TRANSPORT)	REAR END
51	16647992	65.091	INJ0	DAY	DRY	MOTOR VEHICLE (STOPPED)	REAR END
52	16648033	65.066	INJ0	DARK	WET	MOTOR VEHICLE (STOPPED)	REAR END
53	16653256	65.089	INJ0	DAY	DRY	MOTOR VEHICLE (STOPPED)	REAR END
54	16667953	65.042	INJ0	DAY	DRY	MOTOR VEHICLE (IN TRANSPORT)	REAR END
55	16668832	65.035	INJ1	DAY	DRY	MOTOR VEHICLE (STOPPED)	REAR END
56	16671865	65.067	INJ0	DAY	DRY	MOTOR VEHICLE (STOPPED)	REAR END
57	16675971	65.031	INJ0	DARK	DRY	MOTOR VEHICLE (IN TRANSPORT)	REAR END
58	17532392	65.030	INJ2	DAY	DRY	MOTOR VEHICLE (STOPPED)	HEAD ON
59	17545058	65.030	INJ0	DAY	DRY	MOTOR VEHICLE (IN TRANSPORT)	REAR END
60	17549787	65.030	INJ0	DAY	DRY	MOTOR VEHICLE (IN TRANSPORT)	REAR END
61	17552987	65.030	INJ0	DAY	DRY	MOTOR VEHICLE (IN TRANSPORT)	SIDESWIPE SAME
62	17581739	65.050	INJ0	DAY	DRY	MOTOR VEHICLE (IN TRANSPORT)	REAR END
63	17592634	65.065	INJ0	DAY	DRY	MOTOR VEHICLE (STOPPED)	REAR END
64	17608352	65.030	INJ0	DAY	DRY	MOTOR VEHICLE (IN TRANSPORT)	SIDESWIPE SAME
65	17617655	65.038	INJ0	DAY	DRY	MOTOR VEHICLE (STOPPED)	SIDESWIPE SAME
66	17641803	65.060	INJ0	DAY	DRY	MOTOR VEHICLE (STOPPED)	REAR END
67	17678695	65.050	INJ1	DARK	DRY	MOTOR VEHICLE (STOPPED)	REAR END
68	18509869	65.026	INJ1	DUSK	WET	MOTOR VEHICLE (STOPPED)	REAR END
69	18533093	65.002	INJ0	DUSK	WET	MOTOR VEHICLE (STOPPED)	REAR END
70	18544257	65.093	INJ0	DAY	DRY	MOTOR VEHICLE (STOPPED)	REAR END
71	18551711	65.065	INJ0	DAY	DRY	MOTOR VEHICLE (STOPPED)	REAR END
72	18579841	65.055	INJ1	DAY	DRY	SPILL (TWO-WHEELED VEH)	NO COLLISION W/MV
73	18597406	65.024	INJ0	DAY	DRY	MOTOR VEHICLE (IN TRANSPORT)	REAR END
74	18615003	65.091	INJ0	DAY	DRY	MOTOR VEHICLE (STOPPED)	REAR END
75	18641765	65.032	INJ0	DAY	DRY	MOTOR VEHICLE (IN TRANSPORT)	REAR END

### MPT 65.100 to 65.200 ( Stack #10 )

**Total Crashes: 94   Light: 83   Dark: 11   Dry: 89   Wet: 5   Fatalities: 1   Injuries: 15   PDO: 78**

1	15504013	65.130	INJ0	DAY	DRY	MOTOR VEHICLE (STOPPED)	REAR END
2	15511878	65.130	INJ0	DAY	WET	MOTOR VEHICLE (STOPPED)	REAR END
3	15526309	65.130	INJ0	DAY	DRY	MOTOR VEHICLE (STOPPED)	REAR END

## Section Crashes

4	15531744	65.162	INJ0	DAY	DRY	MOTOR VEHICLE (STOPPED)	REAR END
5	15545956	65.130	INJ0	DAY	DRY	MOTOR VEHICLE (STOPPED)	REAR END
6	15545969	65.117	INJ0	DAY	DRY	MOTOR VEHICLE (IN TRANSPORT)	REAR END
7	15552182	65.128	INJ0	DAY	DRY	MOTOR VEHICLE (STOPPED)	REAR END
8	15560671	65.101	INJ0	DAY	DRY	MOTOR VEHICLE (STOPPED)	REAR END
9	15573538	65.113	INJ0	DAY	DRY	MOTOR VEHICLE (IN TRANSPORT)	REAR END
10	15573567	65.134	INJ1	DAY	DRY	MOTOR VEHICLE (STOPPED)	REAR END
11	15589966	65.130	INJ0	DAY	DRY	MOTOR VEHICLE (STOPPED)	REAR END
12	15594239	65.130	INJ0	DAY	DRY	MOTOR VEHICLE (IN TRANSPORT)	REAR END
13	15594264	65.189	INJ0	DAY	DRY	MOTOR VEHICLE (STOPPED)	REAR END
14	15595126	65.130	INJ0	DAY	DRY	MOTOR VEHICLE (STOPPED)	REAR END
15	15595127	65.130	INJ0	DAY	DRY	MOTOR VEHICLE (STOPPED)	REAR END
16	15605761	65.130	INJ0	DAY	DRY	MOTOR VEHICLE (STOPPED)	REAR END
17	15615927	65.130	INJ0	DARK	DRY	MOTOR VEHICLE (STOPPED)	REAR END
18	15633024	65.130	INJ0	DAY	DRY	MOTOR VEHICLE (STOPPED)	REAR END
19	15641506	65.130	INJ1	DAY	DRY	MOTOR VEHICLE (STOPPED)	REAR END
20	15651654	65.136	INJ1	DAY	WET	MOTOR VEHICLE (STOPPED)	REAR END
21	16504031	65.162	INJ0	DAY	DRY	MOTOR VEHICLE (STOPPED)	SIDESWIPE SAME
22	16514404	65.190	INJ0	DAY	DRY	MOTOR VEHICLE (STOPPED)	REAR END
23	16526781	65.130	INJ0	DAY	DRY	MOTOR VEHICLE (STOPPED)	REAR END
24	16533514	65.130	INJ0	DAY	DRY	MOTOR VEHICLE (STOPPED)	REAR END
25	16540045	65.130	INJ0	DAY	DRY	MOTOR VEHICLE (STOPPED)	REAR END
26	16542739	65.130	INJ0	DAY	DRY	MOTOR VEHICLE (STOPPED)	REAR END
27	16546974	65.130	INJ0	DARK	DRY	MOTOR VEHICLE (STOPPED)	REAR END
28	16548660	65.130	INJ0	DAY	DRY	MOTOR VEHICLE (STOPPED)	REAR END
29	16550579	65.130	INJ0	DAY	DRY	MOTOR VEHICLE (STOPPED)	REAR END
30	16596276	65.145	INJ0	DAY	DRY	MOTOR VEHICLE (IN TRANSPORT)	ANGLE
31	16602080	65.130	INJ0	DAY	DRY	MOTOR VEHICLE (STOPPED)	REAR END
32	16610056	65.130	INJ1	DAY	DRY	MOTOR VEHICLE (STOPPED)	REAR END
33	16618993	65.130	INJ0	DAY	DRY	MOTOR VEHICLE (STOPPED)	REAR END
34	16630964	65.140	INJ1	DAY	DRY	MOTOR VEHICLE (IN TRANSPORT)	REAR END
35	16632754	65.197	INJ0	DAY	DRY	MOTOR VEHICLE (STOPPED)	REAR END
36	16633491	65.100	INJ0	DAY	DRY	OTHER NONCOLLISION	NO COLLISION W/MV
37	16653133	65.130	INJ0	DAY	DRY	MOTOR VEHICLE (STOPPED)	REAR END
38	16653238	65.135	INJ0	DAY	DRY	MOTOR VEHICLE (STOPPED)	REAR END
39	17008535	65.130	INJ2	DUSK	DRY	PEDALCYCLE	ANGLE
40	17502716	65.130	INJ0	DARK	DRY	MOTOR VEHICLE (STOPPED)	REAR END
41	17507159	65.130	INJ0	DARK	DRY	MOTOR VEHICLE (STOPPED)	REAR END



## Section Crashes

42	17513397	65.130	INJ0	DAY	DRY	MOTOR VEHICLE (IN TRANSPORT)	REAR END
43	17513477	65.130	INJ0	DAY	DRY	MOTOR VEHICLE (IN TRANSPORT)	REAR END
44	17514225	65.130	INJ0	DARK	DRY	MOTOR VEHICLE (STOPPED)	REAR END
45	17514243	65.130	INJ0	DAY	DRY	MOTOR VEHICLE (IN TRANSPORT)	REAR END
46	17525370	65.130	INJ0	DAY	DRY	GUARDRAIL END	NO COLLISION W/MV
47	17531921	65.130	INJ1	DAY	DRY	MOTOR VEHICLE (STOPPED)	REAR END
48	17531935	65.130	INJ0	DAY	DRY	MOTOR VEHICLE (STOPPED)	REAR END
49	17538705	65.130	INJ0	DAY	DRY	MOTOR VEHICLE (STOPPED)	REAR END
50	17541094	65.130	INJ0	DAY	DRY	MOTOR VEHICLE (IN TRANSPORT)	REAR END
51	17544928	65.130	INJ0	DAY	DRY	MOTOR VEHICLE (STOPPED)	REAR END
52	17545060	65.130	INJ0	DARK	DRY	MOTOR VEHICLE (STOPPED)	REAR END
53	17545089	65.130	INJ0	DAY	DRY	MOTOR VEHICLE (IN TRANSPORT)	REAR END
54	17548599	65.130	INJ0	DAY	DRY	MOTOR VEHICLE (STOPPED)	REAR END
55	17549899	65.130	INJ1	DAY	DRY	MOTOR VEHICLE (IN TRANSPORT)	REAR END
56	17554986	65.130	INJ1	DAY	DRY	MOTOR VEHICLE (STOPPED)	REAR END
57	17554987	65.130	INJ0	DARK	DRY	MOTOR VEHICLE (IN TRANSPORT)	REAR END
58	17562600	65.130	INJ0	DAY	DRY	MOTOR VEHICLE (IN TRANSPORT)	REAR END
59	17562609	65.130	INJ0	DAY	DRY	MOTOR VEHICLE (STOPPED)	REAR END
60	17562652	65.130	INJ0	DAY	DRY	MOTOR VEHICLE (STOPPED)	REAR END
61	17567820	65.130	INJ1	DUSK	DRY	MOTOR VEHICLE (STOPPED)	REAR END
62	17567913	65.130	INJ4	DAY	DRY	EMBANKMENT	NO COLLISION W/MV
63	17572219	65.130	INJ1	DAY	DRY	MOTOR VEHICLE (STOPPED)	REAR END
64	17577079	65.130	INJ0	DAY	DRY	MOTOR VEHICLE (STOPPED)	REAR END
65	17580988	65.130	INJ0	DAY	DRY	MOTOR VEHICLE (IN TRANSPORT)	REAR END
66	17581820	65.130	INJ1	DAY	DRY	MOTOR VEHICLE (STOPPED)	REAR END
67	17582440	65.130	INJ0	DAY	DRY	MOTOR VEHICLE (STOPPED)	REAR END
68	17586742	65.130	INJ0	DAY	DRY	MOTOR VEHICLE (IN TRANSPORT)	REAR END
69	17592462	65.190	INJ0	DAY	DRY	MOTOR VEHICLE (STOPPED)	REAR END
70	17592472	65.130	INJ0	DAY	WET	MOTOR VEHICLE (IN TRANSPORT)	SIDESWIPE SAME
71	17592565	65.190	INJ0	DARK	DRY	MOTOR VEHICLE (STOPPED)	REAR END
72	17592581	65.120	INJ0	DAY	DRY	MOTOR VEHICLE (STOPPED)	REAR END
73	17595703	65.130	INJ0	DAY	DRY	MOTOR VEHICLE (STOPPED)	REAR END
74	17597768	65.120	INJ0	DAY	DRY	MOTOR VEHICLE (IN TRANSPORT)	ANGLE
75	17599930	65.130	INJ0	DAY	DRY	MOTOR VEHICLE (STOPPED)	REAR END
76	17603700	65.130	INJ0	DAY	DRY	MOTOR VEHICLE (IN TRANSPORT)	REAR END
77	17609308	65.130	INJ0	DAY	DRY	MOTOR VEHICLE (STOPPED)	REAR END
78	17613978	65.130	INJ0	DAY	DRY	MOTOR VEHICLE (IN TRANSPORT)	REAR END
79	17614011	65.130	INJ0	DAY	DRY	MOTOR VEHICLE (STOPPED)	REAR END

## Section Crashes

80	17614013	65.130	INJ0	DAY	DRY	TREE	NO COLLISION W/MV
81	17629608	65.130	INJ1	DAY	DRY	MOTOR VEHICLE (IN TRANSPORT)	SIDESWIPE SAME
82	17629617	65.130	INJ0	DAY	DRY	MOTOR VEHICLE (IN TRANSPORT)	ANGLE
83	17630730	65.130	INJ0	DAY	WET	MOTOR VEHICLE (IN TRANSPORT)	REAR END
84	17642490	65.130	INJ0	DAY	DRY	MOTOR VEHICLE (IN TRANSPORT)	REAR END
85	17647684	65.130	INJ0	DARK	DRY	MOTOR VEHICLE (STOPPED)	REAR END
86	17647801	65.130	INJ0	DAY	DRY	MOTOR VEHICLE (IN TRANSPORT)	REAR END
87	17659309	65.130	INJ0	DAY	DRY	MOTOR VEHICLE (STOPPED)	REAR END
88	17662766	65.130	INJ2	DAY	DRY	MOTOR VEHICLE (STOPPED)	REAR END
89	17676066	65.130	INJ0	DAY	DRY	MOTOR VEHICLE (STOPPED)	NO COLLISION W/MV
90	17676864	65.130	INJ0	DAY	WET	MOTOR VEHICLE (IN TRANSPORT)	REAR END
91	17681416	65.130	INJ0	DAY	DRY	MOTOR VEHICLE (STOPPED)	REAR END
92	18536783	65.133	INJ0	DAY	DRY	MOTOR VEHICLE (STOPPED)	REAR END
93	18587421	65.103	INJ1	DAY	DRY	MOTOR VEHICLE (STOPPED)	REAR END
94	18614501	65.119	INJ0	DAY	DRY	MOTOR VEHICLE (IN TRANSPORT)	REAR END

## MPT 65.200 to 65.300 ( Stack #11 )

**Total Crashes: 28   Light: 23   Dark: 5   Dry: 23   Wet: 5   Fatalities: 0   Injuries: 7   PDO: 21**

1	15514044	65.252	INJ0	DAY	DRY	MOTOR VEHICLE (STOPPED)	REAR END
2	15541927	65.219	INJ0	DAY	DRY	MOTOR VEHICLE (IN TRANSPORT)	ANGLE
3	15573594	65.257	INJ1	DAY	DRY	MOTOR VEHICLE (IN TRANSPORT)	REAR END
4	16577907	65.206	INJ0	DAY	DRY	MOTOR VEHICLE (IN TRANSPORT)	ANGLE
5	16653189	65.291	INJ0	DARK	DRY	MOTOR VEHICLE (IN TRANSPORT)	REAR END
6	16653190	65.291	INJ1	DARK	DRY	MOTOR VEHICLE (IN TRANSPORT)	REAR END
7	17502740	65.230	INJ0	DAY	WET	MOTOR VEHICLE (IN TRANSPORT)	ANGLE
8	17506593	65.280	INJ1	DAY	DRY	MOTOR VEHICLE (STOPPED)	REAR END
9	17506749	65.230	INJ0	DAY	DRY	MOTOR VEHICLE (STOPPED)	REAR END
10	17512647	65.200	INJ1	DAY	DRY	MOTOR VEHICLE (STOPPED)	REAR END
11	17513174	65.230	INJ0	DAY	DRY	DITCH	NO COLLISION W/MV
12	17513175	65.230	INJ0	DAY	DRY	MOTOR VEHICLE (IN TRANSPORT)	SIDESWIPE SAME
13	17513284	65.230	INJ1	DARK	DRY	MOTOR VEHICLE (STOPPED)	REAR END
14	17513300	65.230	INJ0	DARK	DRY	MOTOR VEHICLE (IN TRANSPORT)	REAR END
15	17544980	65.280	INJ0	DAY	WET	MOTOR VEHICLE (STOPPED)	REAR END
16	17555469	65.230	INJ0	DAY	DRY	MOTOR VEHICLE (STOPPED)	REAR END
17	17581742	65.230	INJ0	DAY	WET	MOTOR VEHICLE (STOPPED)	REAR END
18	17586687	65.230	INJ0	DAY	DRY	MOTOR VEHICLE (IN TRANSPORT)	REAR END
19	17590173	65.230	INJ1	DAY	DRY	MOTOR VEHICLE (IN TRANSPORT)	ANGLE
20	17592458	65.280	INJ0	DAY	DRY	MOTOR VEHICLE (STOPPED)	REAR END

## Section Crashes

21	17592532	65.220	INJ0	DAY	DRY	MOTOR VEHICLE (STOPPED)	REAR END
22	17598922	65.280	INJ0	DAY	DRY	MOTOR VEHICLE (STOPPED)	REAR END
23	17599296	65.230	INJ0	DAY	WET	MOTOR VEHICLE (STOPPED)	REAR END
24	17613723	65.230	INJ0	DAY	DRY	MOTOR VEHICLE (STOPPED)	REAR END
25	17617700	65.220	INJ0	DAY	DRY	MOTOR VEHICLE (IN TRANSPORT)	ANGLE
26	17676102	65.230	INJ0	DARK	DRY	MOTOR VEHICLE (STOPPED)	REAR END
27	18555876	65.214	INJ1	DAY	DRY	MOTOR VEHICLE (STOPPED)	REAR END
28	18636398	65.231	INJ0	DAY	WET	MEDIAN BARRIER	NO COLLISION W/MV

## MPT 65.300 to 65.400 ( Stack #12 )

**Total Crashes: 24   Light: 20   Dark: 4   Dry: 21   Wet: 3   Fatalities: 0   Injuries: 4   PDO: 20**

1	15505296	65.344	INJ0	DAWN	WET	MOTOR VEHICLE (IN TRANSPORT)	REAR END
2	15519802	65.352	INJ0	DAY	DRY	MOTOR VEHICLE (IN TRANSPORT)	SIDESWIPE SAME
3	15521330	65.363	INJ0	DAY	DRY	MOTOR VEHICLE (STOPPED)	REAR END
4	16534068	65.345	INJ0	DAY	DRY	MOTOR VEHICLE (IN TRANSPORT)	REAR END
5	16541803	65.302	INJ0	DAY	DRY	MOTOR VEHICLE (IN TRANSPORT)	SIDESWIPE SAME
6	16567681	65.377	INJ0	DAY	DRY	MOTOR VEHICLE (IN TRANSPORT)	REAR END
7	16569349	65.389	INJ0	DAY	DRY	MOTOR VEHICLE (IN TRANSPORT)	REAR END
8	16630871	65.363	INJ0	DARK	DRY	MOTOR VEHICLE (STOPPED)	REAR END
9	17509129	65.380	INJ0	DAY	DRY	MOTOR VEHICLE (IN TRANSPORT)	REAR END
10	17516046	65.380	INJ1	DAY	DRY	MOTOR VEHICLE (STOPPED)	REAR END
11	17516049	65.380	INJ0	DAY	DRY	MOTOR VEHICLE (STOPPED)	REAR END
12	17542606	65.380	INJ2	DAY	DRY	MOTOR VEHICLE (IN TRANSPORT)	SIDESWIPE SAME
13	17544847	65.380	INJ0	DARK	DRY	MOTOR VEHICLE (IN TRANSPORT)	ANGLE
14	17548565	65.380	INJ0	DAY	DRY	MOTOR VEHICLE (IN TRANSPORT)	REAR END
15	17549704	65.330	INJ0	DAY	WET	MOTOR VEHICLE (IN TRANSPORT)	REAR END
16	17553613	65.330	INJ0	DAY	DRY	MOTOR VEHICLE (IN TRANSPORT)	SIDESWIPE SAME
17	17563447	65.380	INJ0	DAY	DRY	MOTOR VEHICLE (IN TRANSPORT)	REAR END
18	17571307	65.310	INJ1	DAY	DRY	MEDIAN BARRIER	NO COLLISION W/MV
19	17590195	65.330	INJ1	DARK	WET	IMPACT ATTENUATOR/CRASH CUSHION	NO COLLISION W/MV
20	17613717	65.330	INJ0	DAY	DRY	MOTOR VEHICLE (STOPPED)	REAR END
21	17615889	65.380	INJ0	DAY	DRY	MOTOR VEHICLE (STOPPED)	REAR END
22	17639478	65.380	INJ0	DAY	DRY	OTHER MOVABLE OBJECT	NO COLLISION W/MV
23	17656838	65.320	INJ0	DAY	DRY	MOTOR VEHICLE (STOPPED)	REAR END
24	18618458	65.397	INJ0	DAY	DRY	MOTOR VEHICLE (IN TRANSPORT)	SIDESWIPE SAME

## Section Crashes

### MPT 65.400 to 65.500 ( Stack #13 )

**Total Crashes: 23   Light: 19   Dark: 4   Dry: 21   Wet: 2   Fatalities: 0   Injuries: 3   PDO: 20**

1	15520995	65.494	INJ0	DUSK	DRY	MOTOR VEHICLE (IN TRANSPORT)	ANGLE
2	15521326	65.485	INJ0	DAY	DRY	MOTOR VEHICLE (STOPPED)	REAR END
3	15527047	65.442	INJ0	DAY	DRY	MOTOR VEHICLE (STOPPED)	REAR END
4	15531564	65.494	INJ0	DAY	DRY	MOTOR VEHICLE (IN TRANSPORT)	SIDESWIPE SAME
5	15561478	65.474	INJ0	DAY	DRY	MOTOR VEHICLE (IN TRANSPORT)	ANGLE
6	15573451	65.480	INJ0	DAY	WET	MOTOR VEHICLE (IN TRANSPORT)	REAR END
7	15573741	65.453	INJ0	DAY	DRY	MOTOR VEHICLE (IN TRANSPORT)	SIDESWIPE SAME
8	16536283	65.442	INJ0	DAY	DRY	MOTOR VEHICLE (STOPPED)	REAR END
9	16565401	65.438	INJ1	DAY	DRY	OVERTURN/ROLLOVER	NO COLLISION W/MV
10	16579226	65.441	INJ0	DAY	DRY	MOTOR VEHICLE (IN TRANSPORT)	ANGLE
11	16596398	65.485	INJ0	DAY	DRY	MOTOR VEHICLE (STOPPED)	REAR END
12	16602108	65.485	INJ2	DARK	DRY	MOTOR VEHICLE (IN TRANSPORT)	SIDESWIPE SAME
13	16630498	65.444	INJ0	DARK	DRY	MOTOR VEHICLE (IN TRANSPORT)	REAR END
14	16630919	65.493	INJ0	DUSK	DRY	MOTOR VEHICLE (IN TRANSPORT)	SIDESWIPE SAME
15	16633400	65.470	INJ0	DAY	DRY	MOTOR VEHICLE (IN TRANSPORT)	REAR END
16	16633401	65.470	INJ0	DAY	DRY	MOTOR VEHICLE (IN TRANSPORT)	REAR END
17	16640112	65.467	INJ1	DAY	DRY	MOTOR VEHICLE (STOPPED)	REAR END
18	17581982	65.440	INJ0	DAY	DRY	MOTOR VEHICLE (STOPPED)	REAR END
19	17651097	65.478	INJ0	DAY	DRY	MOTOR VEHICLE (IN TRANSPORT)	REAR END
20	17662818	65.436	INJ0	DAY	DRY	MOTOR VEHICLE (STOPPED)	REAR END
21	18581436	65.442	INJ0	DAY	WET	MOTOR VEHICLE (IN TRANSPORT)	REAR END
22	18594089	65.488	INJ0	DAY	DRY	MOTOR VEHICLE (IN TRANSPORT)	REAR END
23	18614580	65.452	INJ0	DAY	DRY	MEDIAN BARRIER	NO COLLISION W/MV

### MPT 65.500 to 65.600 ( Stack #14 )

**Total Crashes: 27   Light: 21   Dark: 6   Dry: 22   Wet: 5   Fatalities: 0   Injuries: 4   PDO: 23**

1	15504526	65.568	INJ0	DARK	WET	MOTOR VEHICLE (IN TRANSPORT)	REAR END
2	15509627	65.565	INJ1	DAY	DRY	MOTOR VEHICLE (IN TRANSPORT)	REAR END
3	15561475	65.532	INJ0	DAY	DRY	MOTOR VEHICLE (IN TRANSPORT)	REAR END
4	15626038	65.523	INJ0	DAY	DRY	MOTOR VEHICLE (IN TRANSPORT)	REAR END
5	15638627	65.548	INJ0	DARK	DRY	MOTOR VEHICLE (STOPPED)	REAR END
6	16543120	65.580	INJ0	DAY	DRY	MOTOR VEHICLE (IN TRANSPORT)	REAR END
7	16582958	65.542	INJ0	DAY	DRY	MEDIAN BARRIER	NO COLLISION W/MV
8	16598205	65.570	INJ0	DAY	WET	MOTOR VEHICLE (IN TRANSPORT)	SIDESWIPE SAME
9	16616905	65.532	INJ0	DARK	DRY	MOTOR VEHICLE (IN TRANSPORT)	SIDESWIPE SAME

## Section Crashes

10	16633147	65.530	INJ0	DAY	DRY	MOTOR VEHICLE (IN TRANSPORT)	REAR END
11	16639950	65.576	INJ0	DAY	DRY	MOTOR VEHICLE (STOPPED)	REAR END
12	16648013	65.520	INJ0	DAY	DRY	MOTOR VEHICLE (IN TRANSPORT)	REAR END
13	17567587	65.530	INJ0	DAY	DRY	MOTOR VEHICLE (PARKED)	ANGLE
14	17581748	65.530	INJ0	DAY	WET	GUARDRAIL FACE	NO COLLISION W/MV
15	17592465	65.590	INJ0	DAY	DRY	MOTOR VEHICLE (STOPPED)	REAR END
16	17647914	65.502	INJ0	DAY	DRY	MOTOR VEHICLE (IN TRANSPORT)	REAR END
17	17684061	65.570	INJ2	DAY	DRY	MOTOR VEHICLE (IN TRANSPORT)	SIDESWIPE SAME
18	18513756	65.563	INJ0	DAY	DRY	MOTOR VEHICLE (IN TRANSPORT)	SIDESWIPE SAME
19	18513815	65.586	INJ0	DARK	DRY	MOTOR VEHICLE (IN TRANSPORT)	SIDESWIPE SAME
20	18513995	65.590	INJ0	DAY	DRY	MOTOR VEHICLE (IN TRANSPORT)	REAR END
21	18524487	65.539	INJ0	DARK	WET	MOTOR VEHICLE (IN TRANSPORT)	SIDESWIPE SAME
22	18588065	65.544	INJ1	DAY	DRY	MOTOR VEHICLE (IN TRANSPORT)	SIDESWIPE SAME
23	18589830	65.547	INJ0	DAY	DRY	MOTOR VEHICLE (STOPPED)	REAR END
24	18589998	65.535	INJ0	DAY	DRY	MOTOR VEHICLE (IN TRANSPORT)	SIDESWIPE SAME
25	18614279	65.543	INJ0	DARK	WET	MOTOR VEHICLE (IN TRANSPORT)	SIDESWIPE SAME
26	18614554	65.518	INJ0	DAY	DRY	MOTOR VEHICLE (STOPPED)	REAR END
27	18614641	65.596	INJ1	DAY	DRY	MOTOR VEHICLE (IN TRANSPORT)	REAR END

### MPT 65.600 to 65.700 ( Stack #15 )

**Total Crashes: 25   Light: 17   Dark: 8   Dry: 21   Wet: 4   Fatalities: 0   Injuries: 4   PDO: 21**

1	15502443	65.693	INJ0	DARK	DRY	MOTOR VEHICLE (STOPPED)	REAR END
2	15503815	65.661	INJ1	DARK	DRY	MOTOR VEHICLE (STOPPED)	REAR END
3	15514043	65.615	INJ0	DAY	DRY	MOTOR VEHICLE (IN TRANSPORT)	REAR END
4	15521354	65.611	INJ1	DARK	WET	MOTOR VEHICLE (IN TRANSPORT)	REAR END
5	15561718	65.626	INJ0	DAY	DRY	MOTOR VEHICLE (IN TRANSPORT)	REAR END
6	15595175	65.622	INJ0	DAY	DRY	MOTOR VEHICLE (IN TRANSPORT)	SIDESWIPE SAME
7	15633033	65.658	INJ0	DARK	DRY	MOTOR VEHICLE (STOPPED)	REAR END
8	15645738	65.655	INJ0	DAY	WET	MEDIAN BARRIER	NO COLLISION W/MV
9	16558700	65.631	INJ2	DAY	DRY	MOTOR VEHICLE (IN TRANSPORT)	REAR END
10	17516028	65.630	INJ0	DAY	DRY	MOTOR VEHICLE (IN TRANSPORT)	REAR END
11	17526811	65.630	INJ0	DUSK	DRY	MOTOR VEHICLE (IN TRANSPORT)	SIDESWIPE SAME
12	17589453	65.630	INJ1	DAY	DRY	MOTOR VEHICLE (IN TRANSPORT)	REAR END
13	17596681	65.660	INJ0	DAY	DRY	MOTOR VEHICLE (IN TRANSPORT)	REAR END
14	17617889	65.630	INJ0	DAY	DRY	MOTOR VEHICLE (IN TRANSPORT)	REAR END
15	17637007	65.630	INJ0	DAY	DRY	MEDIAN BARRIER	NO COLLISION W/MV
16	17637008	65.630	INJ0	DAY	DRY	MOTOR VEHICLE (STOPPED)	SIDESWIPE SAME
17	17642953	65.630	INJ0	DAY	DRY	MOTOR VEHICLE (STOPPED)	REAR END

## Section Crashes

18	17647799	65.630	INJ0	DAY	DRY	MOTOR VEHICLE (STOPPED)	REAR END
19	17686890	65.630	INJ0	DARK	DRY	MEDIAN BARRIER	NO COLLISION W/MV
20	18505329	65.697	INJ0	DAY	DRY	MOTOR VEHICLE (IN TRANSPORT)	SIDESWIPE SAME
21	18534547	65.613	INJ0	DUSK	DRY	MOTOR VEHICLE (IN TRANSPORT)	SIDESWIPE SAME
22	18545456	65.693	INJ0	DAY	DRY	MOTOR VEHICLE (STOPPED)	REAR END
23	18581309	65.642	INJ0	DAY	WET	MOTOR VEHICLE (IN TRANSPORT)	REAR END
24	18597818	65.601	INJ0	DARK	DRY	MEDIAN BARRIER	NO COLLISION W/MV
25	18601858	65.634	INJ0	DAY	WET	MOTOR VEHICLE (IN TRANSPORT)	REAR END

### MPT 65.700 to 65.800 ( Stack #16 )

**Total Crashes: 10   Light: 6   Dark: 4   Dry: 8   Wet: 2   Fatalities: 1   Injuries: 2   PDO: 7**

1	15589984	65.794	INJ0	DARK	DRY	MOTOR VEHICLE (IN TRANSPORT)	SIDESWIPE SAME
2	16501401	65.702	INJ0	DARK	DRY	MOTOR VEHICLE (IN TRANSPORT)	REAR END
3	16504458	65.732	INJ0	DAY	WET	MOTOR VEHICLE (IN TRANSPORT)	SIDESWIPE SAME
4	16533443	65.773	INJ1	DARK	DRY	MOTOR VEHICLE (IN TRANSPORT)	NO COLLISION W/MV
5	16578036	65.767	INJ0	DAY	DRY	MOTOR VEHICLE (IN TRANSPORT)	SIDESWIPE SAME
6	16581335	65.737	INJ0	DAY	DRY	MOTOR VEHICLE (IN TRANSPORT)	REAR END
7	17528340	65.730	INJ1	DAY	DRY	MOTOR VEHICLE (IN TRANSPORT)	REAR END
8	18509732	65.702	INJ0	DAY	DRY	TREE	NO COLLISION W/MV
9	18544815	65.783	INJ4	DARK	WET	MEDIAN BARRIER	NO COLLISION W/MV
10	18589813	65.770	INJ0	DAY	DRY	MOTOR VEHICLE (STOPPED)	REAR END

### MPT 65.800 to 65.900 ( Stack #17 )

**Total Crashes: 8   Light: 5   Dark: 3   Dry: 6   Wet: 2   Fatalities: 0   Injuries: 4   PDO: 4**

1	15560888	65.880	INJ2	DAY	WET	MOTOR VEHICLE (IN TRANSPORT)	REAR END
2	15561470	65.825	INJ0	DAY	DRY	MOTOR VEHICLE (STOPPED)	REAR END
3	16514790	65.863	INJ0	DARK	DRY	OTHER MOVABLE OBJECT	NO COLLISION W/MV
4	16518253	65.858	INJ0	DARK	DRY	OTHER MOVABLE OBJECT	NO COLLISION W/MV
5	18534113	65.859	INJ1	DAY	DRY	MOTOR VEHICLE (IN TRANSPORT)	REAR END
6	18534356	65.889	INJ2	DARK	DRY	MOTOR VEHICLE (PARKED)	REAR END
7	18606027	65.894	INJ1	DAY	DRY	MOTOR VEHICLE (IN TRANSPORT)	REAR END
8	18619795	65.880	INJ0	DAY	WET	MOTOR VEHICLE (STOPPED)	REAR END

### MPT 65.900 to 66.000 ( Stack #18 )

**Total Crashes: 19   Light: 13   Dark: 6   Dry: 17   Wet: 2   Fatalities: 0   Injuries: 3   PDO: 16**

1	15573674	65.920	INJ0	DAY	DRY	MOTOR VEHICLE (IN TRANSPORT)	REAR END
2	15581590	65.961	INJ0	DAY	DRY	MOTOR VEHICLE (IN TRANSPORT)	REAR END
3	15597930	65.937	INJ0	DUSK	DRY	MOTOR VEHICLE (IN TRANSPORT)	SIDESWIPE SAME



## Section Crashes

4	15597964	65.974	INJ0	DAY	DRY	MOTOR VEHICLE (STOPPED)	REAR END
5	15628985	65.988	INJ0	DARK	DRY	MOTOR VEHICLE (IN TRANSPORT)	SIDESWIPE SAME
6	16503731	65.932	INJ0	DARK	DRY	MOTOR VEHICLE (IN TRANSPORT)	SIDESWIPE SAME
7	16506285	65.925	INJ0	DUSK	DRY	MEDIAN BARRIER	NO COLLISION W/MV
8	16511726	65.941	INJ0	DAY	DRY	MOTOR VEHICLE (STOPPED)	REAR END
9	16526394	65.936	INJ0	DAY	DRY	OTHER MOVABLE OBJECT	NO COLLISION W/MV
10	16543119	65.994	INJ0	DAY	DRY	MOTOR VEHICLE (IN TRANSPORT)	ANGLE
11	16586782	65.937	INJ0	DAY	DRY	MOTOR VEHICLE (STOPPED)	REAR END
12	16605404	65.956	INJ1	DARK	WET	MEDIAN BARRIER	NO COLLISION W/MV
13	16610115	65.935	INJ0	DAY	DRY	MOTOR VEHICLE (PARKED)	SIDESWIPE SAME
14	16619132	65.937	INJ2	DAY	WET	MOTOR VEHICLE (STOPPED)	REAR END
15	16674406	65.982	INJ0	DAY	DRY	MOTOR VEHICLE (IN TRANSPORT)	REAR END
16	16674407	65.983	INJ0	DAY	DRY	MOTOR VEHICLE (STOPPED)	REAR END
17	17513292	65.979	INJ2	DARK	DRY	MOTOR VEHICLE (IN TRANSPORT)	REAR END
18	18614547	65.982	INJ0	DAY	DRY	CARGO/EQUIP LOSS OR SHIFT	NO COLLISION W/MV
19	18626780	65.922	INJ0	DAY	DRY	MOTOR VEHICLE (IN TRANSPORT)	SIDESWIPE SAME

## MPT 66.000 to 66.100 ( Stack #19 )

**Total Crashes: 16   Light: 13   Dark: 3   Dry: 13   Wet: 3   Fatalities: 0   Injuries: 3   PDO: 13**

1	15502581	66.062	INJ0	DAY	WET	MOTOR VEHICLE (IN TRANSPORT)	REAR END
2	15560708	66.085	INJ0	DAY	DRY	MOTOR VEHICLE (IN TRANSPORT)	REAR END
3	15560931	66.090	INJ0	DAY	DRY	MOTOR VEHICLE (IN TRANSPORT)	REAR END
4	15599554	66.080	INJ1	DAY	DRY	MOTOR VEHICLE (STOPPED)	REAR END
5	16511030	66.067	INJ0	DARK	WET	MOTOR VEHICLE (IN TRANSPORT)	REAR END
6	16554173	66.058	INJ0	DAY	DRY	MOTOR VEHICLE (IN TRANSPORT)	REAR END
7	16577864	66.063	INJ0	DAY	DRY	MOTOR VEHICLE (IN TRANSPORT)	SIDESWIPE SAME
8	16596271	66.015	INJ0	DAY	DRY	MOTOR VEHICLE (STOPPED)	REAR END
9	16596540	66.099	INJ0	DAY	DRY	MOTOR VEHICLE (STOPPED)	REAR END
10	16674386	66.053	INJ0	DAY	DRY	MOTOR VEHICLE (IN TRANSPORT)	ANGLE
11	17581754	66.030	INJ1	DAY	DRY	MOTOR VEHICLE (IN TRANSPORT)	HEAD ON
12	17643454	66.030	INJ0	DAY	DRY	MOTOR VEHICLE (STOPPED)	REAR END
13	18513954	66.094	INJ0	DARK	DRY	MOTOR VEHICLE (IN TRANSPORT)	REAR END
14	18534363	66.081	INJ0	DARK	DRY	MEDIAN BARRIER	NO COLLISION W/MV
15	18545653	66.067	INJ0	DAY	DRY	MOTOR VEHICLE (STOPPED)	REAR END
16	18596203	66.021	INJ1	DAY	WET	MOTOR VEHICLE (STOPPED)	REAR END

## Section Crashes

### MPT 66.100 to 66.200 ( Stack #20 )

**Total Crashes: 30   Light: 23   Dark: 7   Dry: 23   Wet: 7   Fatalities: 0   Injuries: 8   PDO: 22**

1	15504003	66.118	INJ0	DAY	WET	MOTOR VEHICLE (IN TRANSPORT)	REAR END
2	15517461	66.112	INJ0	DARK	WET	MOTOR VEHICLE (PARKED)	ANGLE
3	15519841	66.123	INJ0	DARK	WET	MOTOR VEHICLE (IN TRANSPORT)	REAR END
4	15536148	66.108	INJ1	DAY	WET	MOTOR VEHICLE (IN TRANSPORT)	REAR END
5	15589919	66.129	INJ0	DAY	DRY	MOTOR VEHICLE (STOPPED)	REAR END
6	15590586	66.150	INJ0	DAY	DRY	MOTOR VEHICLE (STOPPED)	REAR END
7	15615969	66.197	INJ0	DAY	DRY	MOTOR VEHICLE (STOPPED)	REAR END
8	15619174	66.142	INJ1	DAY	DRY	MOTOR VEHICLE (IN TRANSPORT)	SIDESWIPE SAME
9	16506283	66.110	INJ0	DARK	WET	MOTOR VEHICLE (IN TRANSPORT)	REAR END
10	16533411	66.160	INJ0	DARK	DRY	MOTOR VEHICLE (IN TRANSPORT)	SIDESWIPE SAME
11	16533540	66.159	INJ0	DAY	DRY	MOTOR VEHICLE (STOPPED)	REAR END
12	16546488	66.156	INJ1	DARK	DRY	MEDIAN BARRIER	ANGLE
13	16596539	66.108	INJ0	DAY	DRY	MOTOR VEHICLE (IN TRANSPORT)	REAR END
14	16599895	66.142	INJ0	DAY	DRY	MOTOR VEHICLE (IN TRANSPORT)	ANGLE
15	16609990	66.138	INJ2	DAY	DRY	MOTOR VEHICLE (IN TRANSPORT)	REAR END
16	16619267	66.116	INJ1	DAY	DRY	MOTOR VEHICLE (STOPPED)	REAR END
17	16630962	66.139	INJ0	DAY	DRY	MOTOR VEHICLE (IN TRANSPORT)	REAR END
18	16643596	66.131	INJ0	DAY	DRY	MOTOR VEHICLE (IN TRANSPORT)	REAR END
19	17538747	66.130	INJ0	DAY	DRY	CARGO/EQUIP LOSS OR SHIFT	NO COLLISION W/MV
20	17596541	66.130	INJ0	DAY	WET	MOTOR VEHICLE (STOPPED)	REAR END
21	17613804	66.130	INJ0	DAY	DRY	MOTOR VEHICLE (STOPPED)	REAR END
22	17651041	66.130	INJ0	DAY	DRY	MOTOR VEHICLE (IN TRANSPORT)	REAR END
23	17658296	66.130	INJ0	DAY	DRY	MOTOR VEHICLE (STOPPED)	REAR END
24	18555836	66.112	INJ1	DARK	DRY	MOTOR VEHICLE (IN TRANSPORT)	REAR END
25	18581306	66.112	INJ0	DAY	WET	MOTOR VEHICLE (IN TRANSPORT)	REAR END
26	18588071	66.115	INJ0	DAY	DRY	MOTOR VEHICLE (IN TRANSPORT)	REAR END
27	18589975	66.128	INJ1	DAY	DRY	MOTOR VEHICLE (STOPPED)	REAR END
28	18592038	66.132	INJ0	DAY	DRY	MOTOR VEHICLE (PARKED)	REAR END
29	18614987	66.100	INJ0	DAY	DRY	MOTOR VEHICLE (IN TRANSPORT)	REAR END
30	18620961	66.117	INJ1	DARK	DRY	MEDIAN BARRIER	NO COLLISION W/MV

### MPT 66.200 to 66.300 ( Stack #21 )

**Total Crashes: 7   Light: 2   Dark: 5   Dry: 4   Wet: 3   Fatalities: 0   Injuries: 3   PDO: 4**

1	15517463	66.280	INJ1	DARK	WET	OTHER MOVABLE OBJECT	NO COLLISION W/MV
2	15517464	66.230	INJ0	DARK	WET	MOTOR VEHICLE (PARKED)	HEAD ON

## **Section Crashes**

3	15518495	66.235	INJ0	DARK	WET	OTHER MOVABLE OBJECT	NO COLLISION W/MV
4	16555990	66.274	INJ1	DAY	DRY	MOTOR VEHICLE (IN TRANSPORT)	REAR END
5	16644064	66.228	INJ0	DUSK	DRY	MOTOR VEHICLE (IN TRANSPORT)	REAR END
6	17538786	66.250	INJ0	DAY	DRY	MOTOR VEHICLE (IN TRANSPORT)	REAR END
7	18594208	66.272	INJ1	DARK	DRY	MOTOR VEHICLE (IN TRANSPORT)	ANGLE